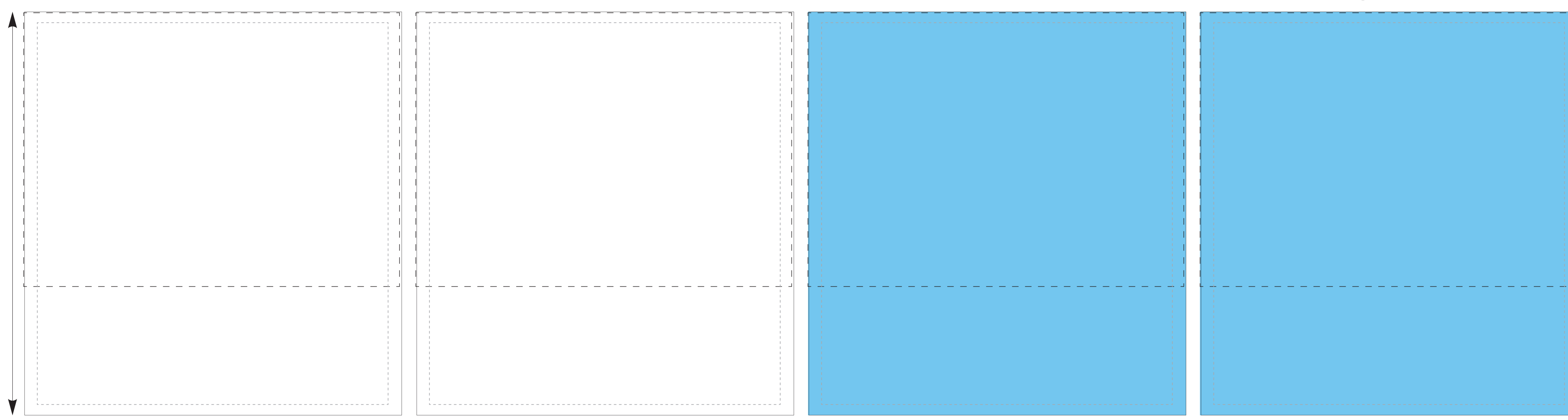


Front Inside

Back Inside

Left Inside

Right Inside



Front Outside

Back Outside

Left Outside

Right Outside

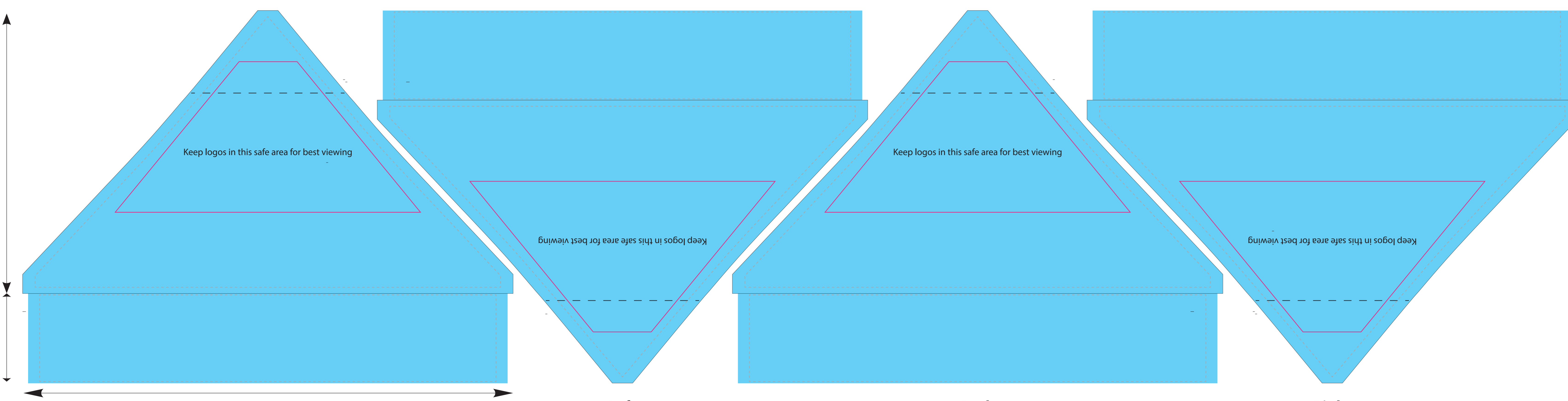


Front Half Outside

Back Half Inside

Left Half Outside

Right Half Outside



Front

Left

Back

Right

KEY
 ■ Material Edge
 ■ ■ ■ Stitch/ Bleed
 Template Scale 1:10

General guidelines

- Use vectorised format for best quality print (editable .pdf, .ai or .eps). .jpg and .png formats are not recommended.
- If you do not have a vectorised logo or artwork, you can try and vectorise it with Image Trace tool (Window > Image Trace.) If the results are not what you wanted, you will have to contact your designer who made the artwork(s) for you.
- Please do not place linked files, as we will not be able to see them when received. Make sure everything are directly placed onto the document.
- For photographs, use .TIFF format.

Do not forget to outline any text before sending artwork.

The quickest way to do this is by selecting everything (Ctrl / Cmd + A) and go to Type > Create Outlines.